

# ROUTE CARD

**Ride Name:** Tough at the Top  
**Grade:** Hard/Intermediate  
**Map Required:** OS Explorer 264  
**Total Distance:** 57.0Km (approx.)  
**Approx. Ride Time:** 4.5hrs  
**Total Height Climbed:** 1,462m

## Cycling Legend




ROUTE A road B road C road Track

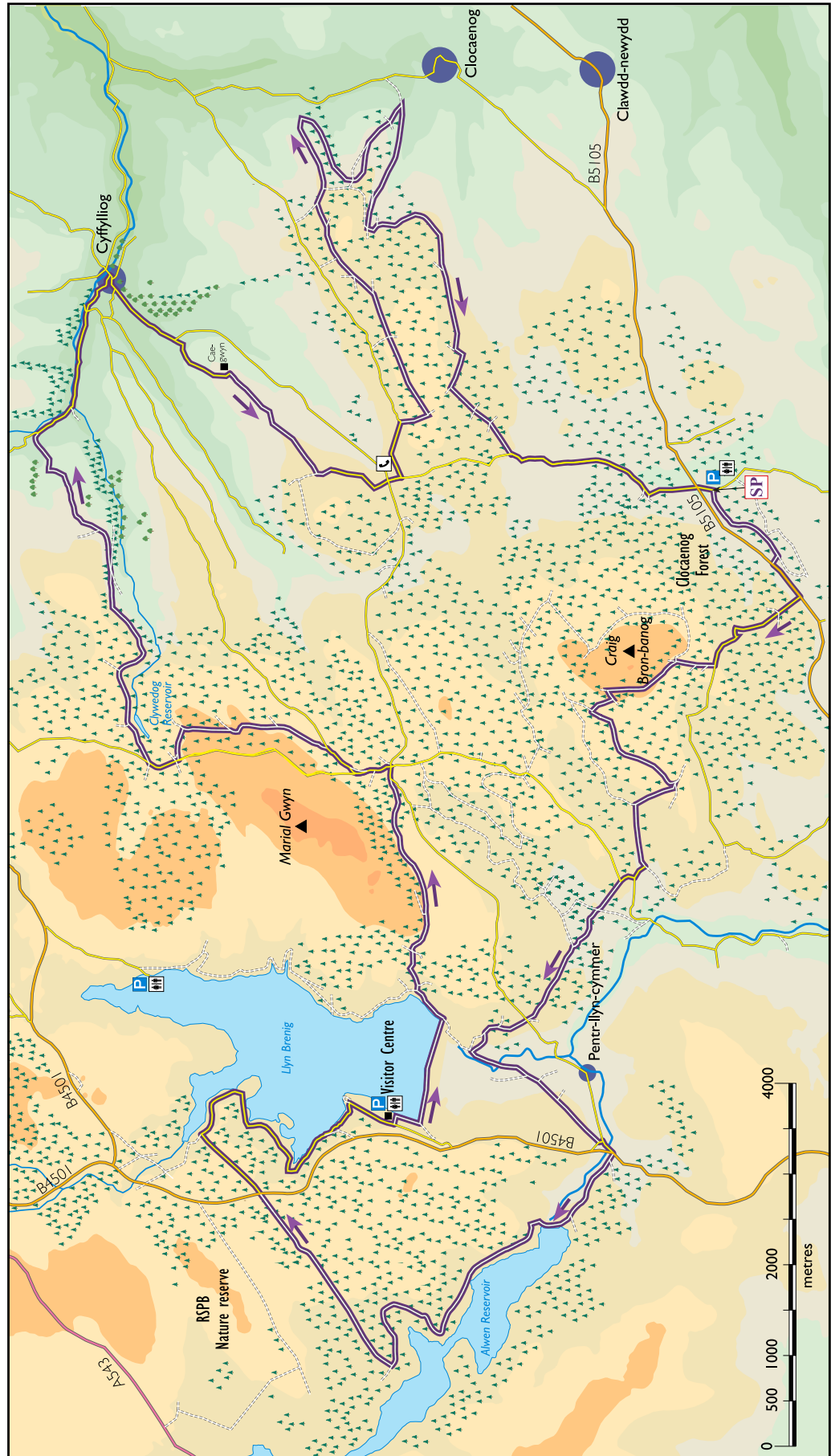
The route is shown as a broad purple line with the type of road and surface inset.

----- Other Bridleway

These maps are based on the 1947 OS 1" to 1 mile map, and updated from ground/bike surveys and aerial photography. © Denbighshire County Council 2003. It is recommended that you purchase the latest OS Explorer map or more detailed mapping.

## Key to symbols

-  Start Point
-  Car Parking
-  Pub
-  Cattle Grid
-  Post Box
-  Information
-  Cafe
-  Public Telephone
-  Farm



Symbol	Description	Distance (Km)	Height (m)
SP	Bod Petryal picnic site.		
	<b>At end of car park area, bear right up forest road.</b>	<b>0.1</b>	
	At junction, turn right.	1.2	
	<b>At junction with main road, turn left. CAUTION, fast approaching traffic.</b>	<b>1.3</b>	
	Turn right onto minor road.	1.8	
	<b>Turn right, then immediately left onto forest road.</b>	<b>3.1</b>	
	At junction, bear right.	3.3	
	<b>At crossroads, continue straight on.</b>	<b>3.6</b>	
	Optional Viewpoint. Turn right up steep climb for great views of the Clwydian Range and Snowdonia. Ride time approx. 10 mins.	3.8	
	<b>Turn left.</b>	<b>4.5</b>	
	Turn right.	4.6	
	<b>At T junction, turn left.</b>	<b>4.9</b>	
	At crossroads, turn right.	6.2	
	<b>At T junction, turn left.</b>	<b>6.7</b>	
	At crossroads, turn right.	7.4	
	<b>At T junction with surfaced road, turn right.</b>	<b>7.6</b>	
	At sharp corner, bear left onto forest track.	7.7	
	<b>Take second left.</b>	<b>8.1</b>	
	At crossroads with surfaced road, continue straight on.	9.7	
	<b>Turn left.</b>	<b>10.2</b>	
	Continue through gate onto surfaced road.	10.8	
	<b>Continue straight on.</b>	<b>11.2</b>	
	At sharp corner, bear right through gate into holding pen. Continue on bridleway through middle gate.	11.3	
	<b>Continue through gate, turn left on surfaced road.</b>	<b>12.3</b>	
	Turn right.	12.4	
	<b>Continue straight over main road. CAUTION, fast approaching vehicles.</b>	<b>12.5</b>	
	Bear right.	12.6	
	<b>Just before the end of the road, turn right onto single track descent, towards the dam wall.</b>	<b>13.4</b>	
	At end of dam wall follow track up to the left.	13.8	
	<b>Turn left.</b>	<b>13.9</b>	
	Follow shore line.	15.4	
	<b>Turn right.</b>	<b>17.1</b>	
	At junction with main road, continue straight on. CAUTION, fast approaching vehicles.	19.5	
	<b>Turn right at T junction.</b>	<b>20.4</b>	
	Follow shore line.	22.9	
	<b>Bear left to shore line. Turn left into car park, just past information centre and through small gate onto path, turn right towards dam wall.</b>	<b>23.8</b>	
	Over dam wall.	24.3	
	<b>Turn left.</b>	<b>25.5</b>	
	Turn right over cattle grid and bear left up bridleway.	25.9	
	<b>Continue straight on.</b>	<b>26.4</b>	
	Continue straight on.	28.5	
	<b>At crossroads, turn left.</b>	<b>28.6</b>	
	Turn right.	29.0	
	<b>Turn left onto forest road.</b>	<b>29.4</b>	
	Bear left.	30.0	
	<b>Bear left.</b>	<b>30.6</b>	
	Bear left.	31.1	
	<b>At junction with surfaced road, turn right.</b>	<b>31.5</b>	
	Bear right onto forest road.	31.8	
	<b>Continue through gates and descend on forest track.</b>	<b>34.1</b>	
	At junction with surfaced road, turn right.	36.2	
	<b>Bear left.</b>	<b>37.7</b>	
	Turn right.	38.2	
	<b>At junction, bear right up steep climb.</b>	<b>39.2</b>	
	At end of surfaced road, turn left onto bridleway, through several gates, towards the forest.	40.1	
	<b>Turn left.</b>	<b>41.5</b>	
	Straight on.	42.4	
	<b>Turn left.</b>	<b>42.6</b>	
	Turn right onto forest road.	43.2	
	<b>Turn left.</b>	<b>43.5</b>	
	At crossroads, continue straight on.	44.5	
	<b>Bear left.</b>	<b>44.7</b>	
	Turn right.	45.1	

<b>Bear left.</b>	<b>45.3</b>
Turn left onto single track. Look for green and white posts.	46.0
<b>At junction with forest road, turn right.</b>	<b>46.2</b>
At the end of the fence line, turn left on single track, follow descent.	46.5
<b>At junction with forest road, turn left.</b>	<b>47.1</b>
Just before end of track, turn right on single track to join lower forest road.	47.3
<b>Turn right.</b>	<b>47.3</b>
Continue to top of climb and turn right on forest road to continue to climb.	48.2
<b>About halfway around corner, turn left onto single track descent.</b>	<b>48.4</b>
Turn right at end of track to continue single track descent.	49.1
<b>Continue straight on, to continue single track descent along fence line.</b>	<b>49.3</b>
At end of single track, turn right to climb up forest road, past house.	49.5
<b>Bear left.</b>	<b>50.8</b>
Turn left.	53.2
<b>Turn right.</b>	<b>53.3</b>
At crossroads, turn left.	53.7
<b>At junction with surfaced road, turn left.</b>	<b>54.7</b>
At crossroads, continue straight on and back to the start point. CAUTION, fast approaching vehicles.	57.0
<b>Finish.</b>	<b>57.1</b>